

CERTIFICATE OF LOCATION OF GOVERNMENT CORNER

NORTHEAST Corner of Section 11, Township 107, Range 39, 5TH P.M.

STATE OF MINNESOTA, County of MURRAY

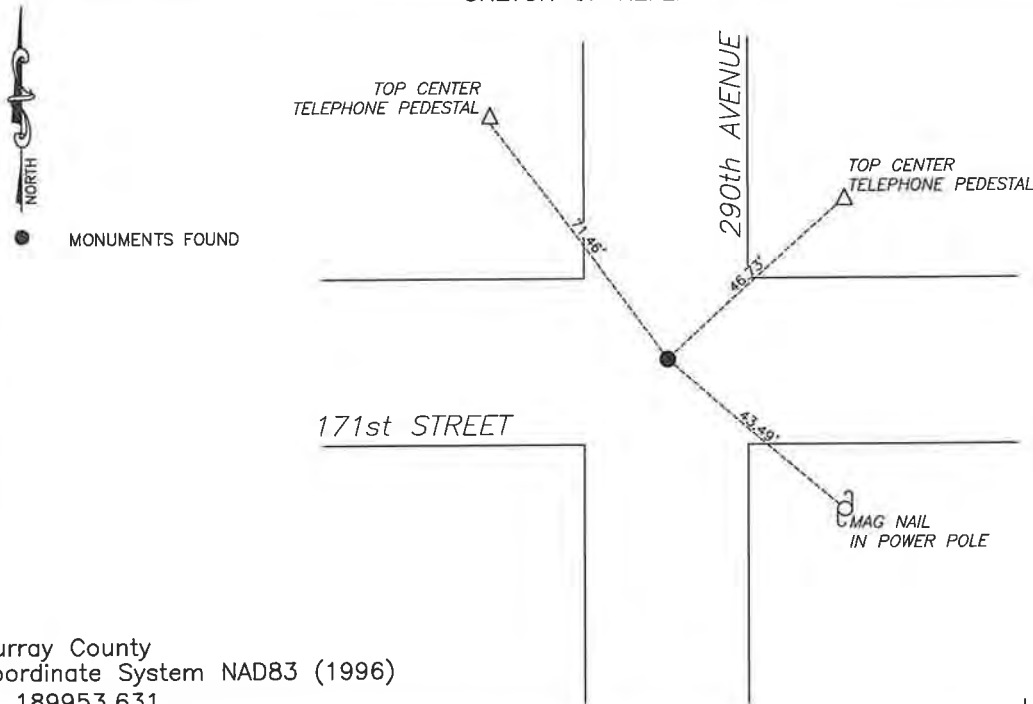
At the corner location shown on the sketch:

☒ On 4/3/2025 found a 1/2" iron with seal #12967
DATE

☒ left monument as found, ☐ lowered monument, ☐ removed monument (explain)

☐ On _____ placed a _____
DATE

SKETCH OF REFERENCE TIES



Murray County
Coordinate System NAD83 (1996)
N: 189953.631
E: 574703.068

WGS84
LAT: 44°05'39.9976"
LON: -95°28'56.4527"

Statement of evidence relative to this corner location is on back of page.

I hereby certify that this document and the data contained herein was prepared by me or under my direct supervision.

Daniel L. Bueltel
Daniel L. Bueltel
License No. 43844

6/19/2025
DATE

JUN 27 2025

Karen Brann

MURRAY COUNTY RECORDER

Statement of Evidence

NORTHEAST CORNER SECTION 11, T107N, R39W OF THE 5th P.M.

In July of 1861, J.W. Myers surveyed the township lines.

In September of 1861, L. Brockmann subdivided the township.

A survey by J.W. Woolstencroft dated April 10, 1907 notes a stone found at the corner.

On August 9, 1980 Gary Martin found a 6" x 8" x 30" pointed field stone with 2 lath and steel fence post beside it. On August 19, 1980 Gary Martin set a $\frac{1}{2}$ " iron reinforcing bar with "LS 12967" cap over pointed field stone.

On Augst 27, 2020, Westwood professional services found an iron with LS cap #12967.

On April 3, 2025 Bueltel-Moseng Land Surveying found a $\frac{1}{2}$ " iron with seal #12967 at the corner.